

Medieval Pottery from St. Anne's Well

P.J. DAVEY

In January 1978 the field surrounding St Anne's Well, Sutton (SD 49979143), was walked by an extra mural class after recent ploughing. Although very small quantities of 18th and 19th century material were recovered from most parts of the field, two sherds of medieval pottery were found within 5 m of the site of the well.

Sherd 1

Thumbed, sagging base fragment (diameter 117 mm). Quartz rich vesicular fabric with small numbers of angular red inclusions, dark grey reduced core, bright orange exterior and dull, ? wiped interior surface. One small drop (c 1 mm in diameter) of green glaze on the underside of the base.

Sherd 2

Body sherd of similar fabric, but almost certainly different vessel. Some mica inclusions.

In view of the comparative rarity of medieval pottery from Merseyside and the south Lancashire area in general, the recovery of these two sherds is of interest. They both probably represent jugs dating from the 14th or 15th century. The sherds have been deposited at Merseyside County Museums, Liverpool.

Bromborough Court House - A Further Note

Gill Chitty

Following the publication of the Society's work on Bromborough Court House (MAS Report No 2, Liverpool), Mr H Edwards, who had lived in the house from 1921 until 1963, contacted the Archaeological Survey with further information about the finds made in the garden of the 17th century building. He kindly loaned the two objects illustrated to the Survey, for drawing and photography. Both were found in the front garden of the house.

1. Brown flint. The broken tip of a pointed tool or weapon of oval section, and worked on both convex surfaces. Late Neolithic/Early Bronze Age.
2. An iron ring of small diameter with flat, pierced bezel. A similar example in bronze was found at Meols in the 19th century (MAS Journal 1, figure 2, 30). Probably medieval.



Fig. 1

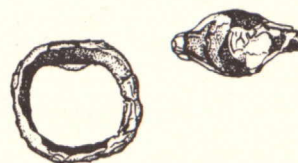


Fig. 2